

ALTERNATORI MONOFASE - 2 Poli

SINGLE-PHASE ALTERNATORS - 2 Poles

C100
Brushless a condensatore
Brushless with Capacitor

CR100
A spazzole con AVR-d
Brush with AVR-d



Caratteristiche tecniche

C100
Tensione standard 50Hz: 230V, 240V 60Hz: 110/220V, 120/240V Altri valori a richiesta
Classe d'isolamento H
Protezione IP 23
T.H.D. ≤ 6%
Precisione tensione + 5%, - 10% (cosφ = 1)
Capacità di spunto (Icc > 3In)
Optional Quadro elettrico, Carica batterie

CR100
Tensione standard 50Hz: range 110÷120/220÷240V 60Hz: range 110÷120/220÷240V Altri valori a richiesta
Classe d'isolamento H
Protezione IP 23
T.H.D. ≤ 6%
Precisione tensione ± 2% (indipendentemente dal cosφ)
Capacità di spunto (Icc > 4In)
Optional Quadro elettrico, Carica batterie
Regolatore automatico di tensione AVR960D • Provvisto di protezioni per Sottovelocità, Massima tensione, Massima corrente di eccitazione, Sovraccarico prolungato (max kVA) • Possibilità di regolare la tensione a distanza

Technical characteristics

C100
Standard voltage 50Hz: 230V, 240V 60Hz: 110/220V, 120/240V Other voltages on request
Insulation class H
Protection IP 23
T.H.D. ≤ 6%
Voltage accuracy + 5%, - 10% (cosφ = 1)
Starting capacity (Icc > 3In)
Optional Electrical panel, Battery charger

CR100
Standard voltage 50Hz: range 110÷120/220÷240V 60Hz: range 110÷120/220÷240V Other voltages on request
Insulation class H
Protection IP 23
T.H.D. ≤ 6%
Voltage accuracy ± 2% (regardless of cosφ)
Starting capacity (Icc > 4In)
Optional Electrical panel, Battery charger
Automatic Voltage Regulator AVR960D • Supplied with protections for Underspeed, Maximum voltage, Maximum excitation current, Prolonged overload (max kVA) • Remotely adjustable voltage regulator

Modello Model	Potenza Output Power		Potenza assorbita Driving Power		Potenza Output Power		Potenza assorbita Driving Power		Peso Weight			
	cosφ 1 [kVA]	cosφ 0,8 [kVA]	4/4 - cosφ 1 [kW] η %		cosφ 1 [kVA]	cosφ 0,8 [kVA]	4/4 - cosφ 1 [kW] η%		cone [kg]	B34 [kg]	SAE [kg]	
50Hz - 3000rpm				60Hz - 3600rpm								
C100 SEJ	4,2	---	5,8	73,0	5,5	---	7,4	74,0	20,5	22,0	24,0	
C100 SFK	5,0	---	6,7	75,0	6,0	---	7,9	76,0	22,0	23,5	25,5	
C100 SFX	5,5	---	7,3	75,5	6,5	---	8,5	76,5	24,0	25,5	27,5	
C100 SG	6,0	---	7,9	76,0	7,5	---	9,7	77,0	27,0	28,5	30,5	
C100 LH	7,0	---	9,0	78,0	8,5	---	10,8	79,0	30,0	31,5	33,5	
C100 LL	8,0	---	10,0	80,0	10,0	---	12,3	81,0	35,0	36,5	38,5	
CR100 SF	5,5	4,5	7,3	75,0	6,5	5,0	8,6	76,0	25,0	26,5	28,5	
CR100 LG	6,0	5,0	7,9	76,0	7,5	6,0	9,7	77,0	29,0	30,5	32,5	
CR100 LH	7,0	5,5	9,0	78,0	8,5	7,0	10,8	79,0	31,0	32,5	34,5	
CR100 LL	8,0	6,5	10,0	80,0	10,0	8,0	12,3	81,0	36,0	37,5	39,5	

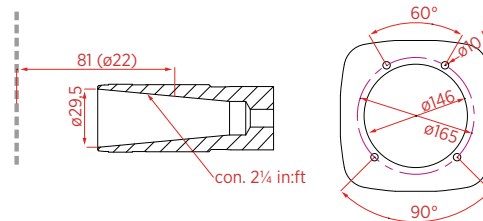
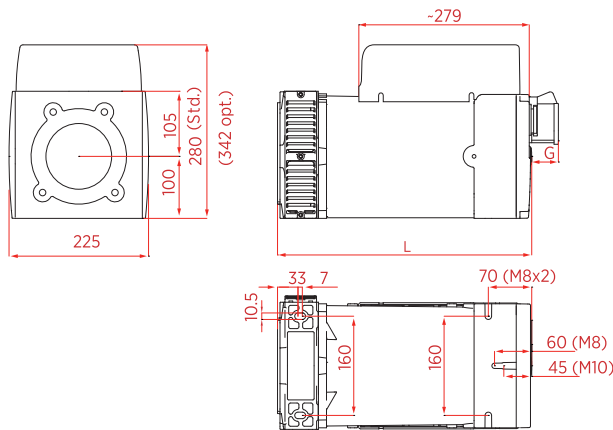
Dimensioni di ingombro

Overall Dimensions

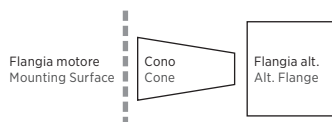
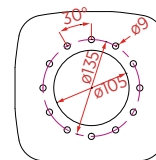
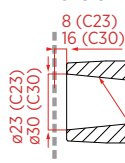
CONE

J609b

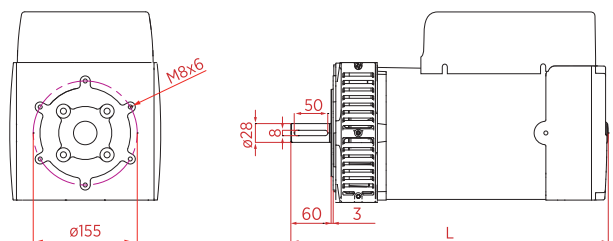
C 22
C 25,4
C 35



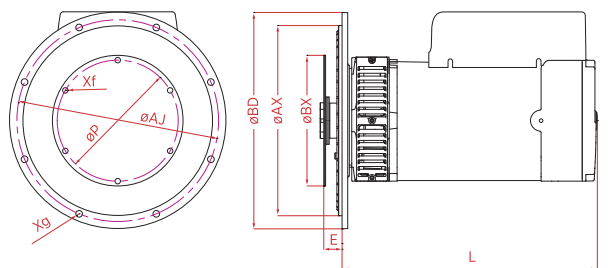
C 23 C 30



B34



SAE



SAE	Flangia Flange			
	ØBD	ØAX	ØAJ	Xf
	[mm]			
5	358	314,33	333,4	Ø11 (8)
4	405	361,95	381,0	Ø11 (12)

SAE	Giunto Joint			
	ØBX	ØP	E	Xg
	[mm]			
6,5	215,9	200,02	30,2	Ø9 (6)
7,5	241,3	222,25	30,2	Ø9 (8)

	cone	B34	SAE
	L		
	[mm]		
C-CR100 S-	345	408	357
C-CR100 L-	410	473	422

Prese Sockets	G
	[mm]
Schuko	13
CEE 16A	55
CEE 32A	67
NEMA	1

Dati tecnici non impegnativi: NSM si riserva il diritto di apportare modifiche senza l'obbligo di darne preventiva comunicazione. Technical data not binding: NSM reserves the right to modify the contents without prior notice.